

VWR® Electrophoresis Products

For all your
Molecular Biology
applications



VWR® Power Source Power Supplies

- Perfect partner for VWR gel boxes
- Designed for safety and performance
- Constant current, voltage or power modes

VWR Power Source Power Supplies are ideal for a wide range of applications including DNA, RNA, and protein electrophoresis; blotting; and many others. Designed with safety in mind, they are loaded with the features that today's molecular biology applications demand.

Two models are available with voltage ranges to 300V and current ranges to 3000mA.

Operating modes include constant voltage or constant current with automatic crossover.

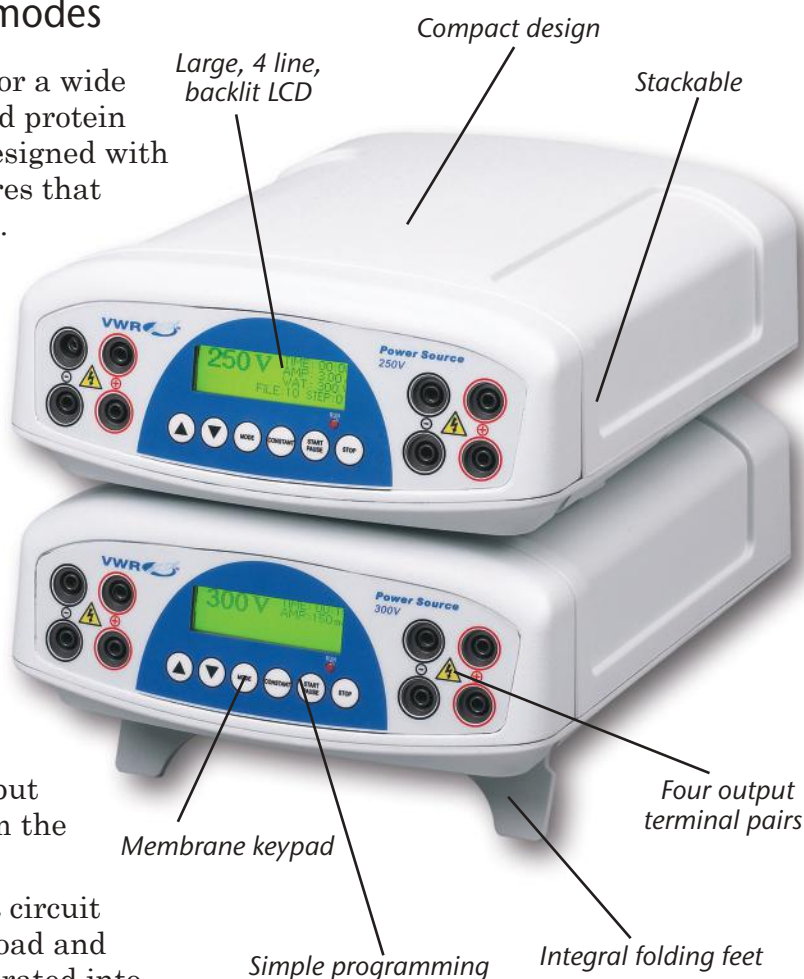
In addition, the Model 250V offers a constant power operating mode. Operation may be timed or continuous.

All parameters, including voltage, current, power (where applicable) and time are easily set using the membrane keypad and displayed digitally on the back lit LCD. Programming is straightforward and simple, and allows setting up multiple voltage/current changes within a single program.

Each unit includes four sets of color coded output terminals allowing multiple gels to be run from the same power supply.

VWR Power Source Power Supplies offer short circuit and over current/over voltage protection. No load and load change detection systems are also incorporated into the software. Programming also includes an option for automatic recovery after a power failure.

Compact in design with a small footprint, the VWR Power Source Power Supplies are also stackable to save space. For easy viewing and setting of parameters on the bench or on a shelf, the front of the power supply can be raised with the integral folding feet.



Specifications

Model	300V	250V
Output Voltage Range/Increments	2-300V/1V	5-250V/1V
Output Current Range/Increments	4-500mA/1mA	10-3000mA/10mA
Output Power Range/Increments	90W max/na	1-300W/1W
Operating constant modes	current or voltage	current or voltage or power
Timer	1 minute to 99 h 59 min or continuous	1 minute to 99h 59 min or continuous
Programmable	No	Yes - 20 programs/10 steps
Dimensions (W x D x H)	19 x 25 x 8 cm (7 1/2 x 9 7/8 x 3 1/8")	19 x 25 x 8 cm (7 1/2 x 9 7/8 x 3 1/8")
Weight	2.2 kg (4.9 lbs)	2.5 kg (5.6 lbs)
Input Voltage	120V	120V

Ordering Information

Description

VWR 300V Power Supply, 120V

VWR 250V Power Supply, 120V

Cat. No.

93000-744

93000-746

VWR® Mini Gel II - A complete horizontal electrophoresis system

- Complete electrophoresis system
- Includes integral, removable power supply
- Quick and easy gel casting

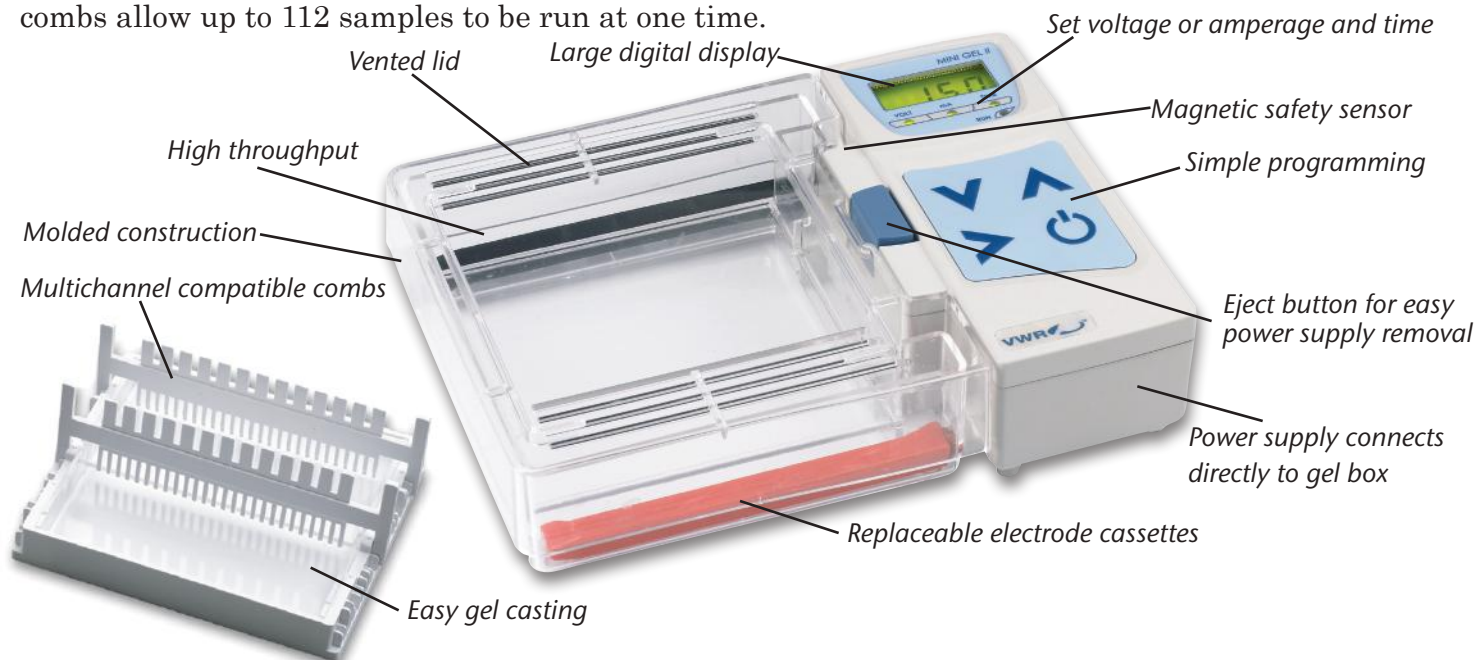
The VWR Mini Gel II is a complete horizontal electrophoresis system. It includes all components necessary for casting and running mini gels - gel trays, combs, casting stand, gel tank, and power supply.

Gel casting is quick and easy. Simply place the gel tray in the casting stand, insert the comb into the slots on the side of the tray and pour the gel. To aid in loading gels, combs are multichannel compatible. The vented lid fits on the gel box just one way. A magnetic sensor in the power supply sends current to the electrodes only when it senses that the lid is properly in place. The power supply connects directly into the gel box. This ensures that it is connected properly every time.

Programming the power supply is simple. Parameters are shown on the large digital display while their values are changed using the arrows on the membrane keypad. Either voltage or amperage may be set as the constant and there is automatic crossover between the two parameters.

The gel tank and gel trays are molded for a long service life and leakproof operation. The electrodes are contained in cassettes to protect them from damage and allow for easy replacement. When cleaning the gel box, the power supply can be disconnected simply by pressing the eject button.

The VWR Mini Gel II is supplied with one large (12.5 x 12.5 cm) gel tray and two small (12.5 x 6 cm) gel trays. The two small gels can be run simultaneously. An optional micro casting set is available with four micro (6 x 6 cm) gel trays. All four can be run at the same time in the tank. The included combs allow up to 112 samples to be run at one time.



Specifications

Overall dimensions (W x D x H)	24.5 x 7.0 x 6.2 cm (9 5/8 x 2 3/4 x 6 1/4")
Maximum sample capacity	112 samples (4 combs, 28 samples each)
Buffer tank volume	Maximum 250 mL
Gel capacity	1 large (12.5 x 12.5 cm), 2 small (12.5 x 6 cm) or 4 micro (6 x 6 cm)
Input voltage	Universal, AC 100V - 240V, 50/60 Hz
Output voltage/current	10 to 150 Volts, constant peak voltage of 150 Volts/ 10 to 400 mA
Timer	Maximum 99 hours, 59 minutes or continuous, audible alert at end of run

Ordering information

Description

VWR Mini Gel II Complete Horizontal Electrophoresis System
Micro casting set - includes 4 each 6 x 6 cm UV transparent gel trays, 2 combs, and casting stand

Cat. No.

95043-650
95043-664

VWR® Horizontal Electrophoresis Systems

- Molded, durable gel boxes and gel trays
- Rubber gates for tapeless gel casting
- “EasyLift” safety lid with buffer recapture system

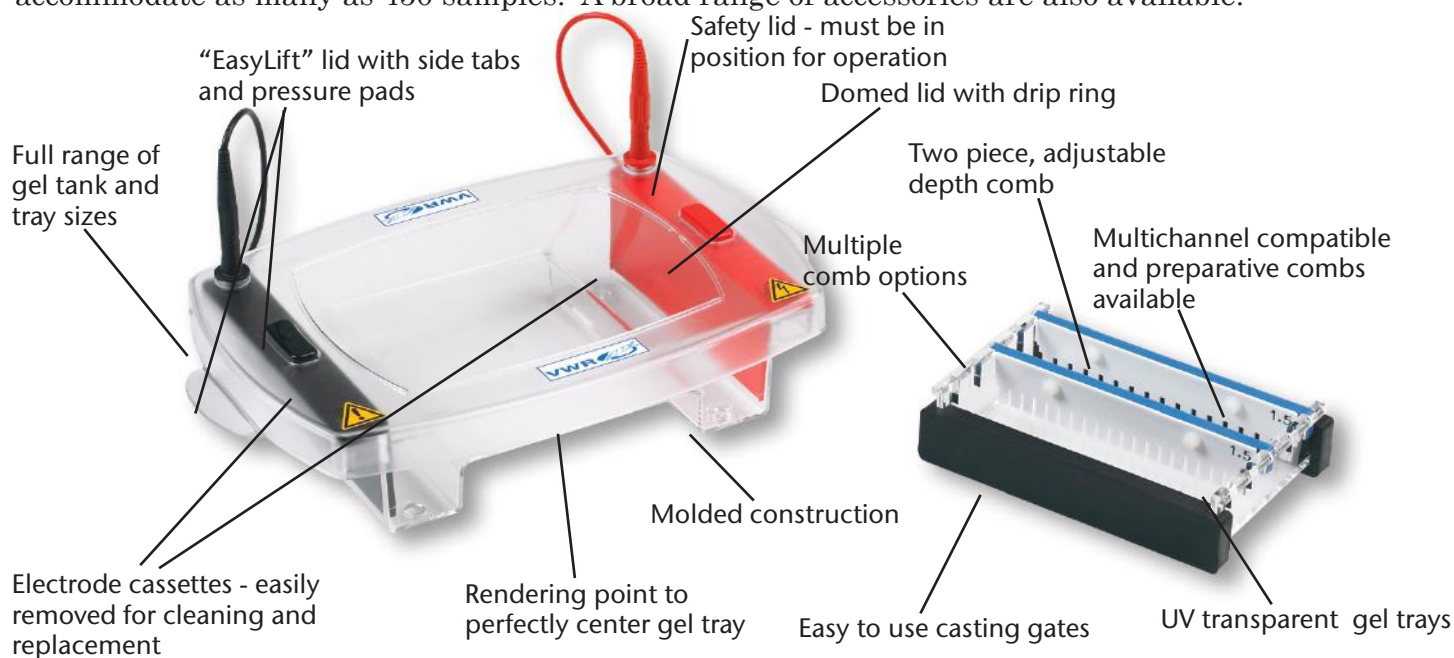
Designed for ease of use and safe operation, the VWR Horizontal Electrophoresis Systems and accessories are built to withstand the rigors of every day use.

For leakproof performance, the gel boxes and gel trays are molded of thick acrylic. UV transparent gel trays aid in visualization of samples. Cassettes protect the electrodes and allow for easy replacement.

Gel casting is simple with the durable rubber casting gates. Slots in the sides of the trays allow for easy comb placement. The two piece design of the combs provides for vertical adjustment, giving the user control over the depth of the well. The combs supplied with the systems are 1.5 mm thick. Multiple combs, including those compatible with multichannel pipettors and different thicknesses, are available.

The “EasyLift” gel box lid is easily removed using the side tabs and pressure pads. The lid is domed, to prevent condensation from dripping onto the gel, and is surrounded by a drip ring, to help recover the condensate and maintain buffer concentration.

A variety of sizes are available, from the compact mini system to the large maxi system which will accommodate as many as 450 samples. A broad range of accessories are also available.



Specifications and Ordering Information

	Mini 7	Mini 10	Midi 10	Midi Plus 10	Midi Plus 15	Maxi 20
Gel dim. (W x L)	7 x 7 cm	7 x 10 cm	10 x 10 cm	15 x 10 cm	15 x 15 cm	20 x 20 cm
Unit dim. (W x L x H)	9 x 21 x 9 cm (3 1/2 x 8 3/4 x 3 1/2")	9 x 21 x 9 cm (5 x 8 5/8 x 3 1/2")	12.5 x 22 x 9 cm (6 7/8 x 10 7/16 x 3 1/2")	17.5 x 26.5 x 9 cm (6 7/8 x 10 7/16 x 3 1/2")	17.5 x 26.5 x 9 cm (6 7/8 x 10 7/16 x 3 1/2")	23 x 39.5 x 9 cm (9 x 15 1/2 x 3 1/2")
Buffer volume	225 mL	225 mL	300 mL	500 mL	500 mL	1,200 mL
Max. sample capacity	32	64	100	140	210	450
Supplied combs	8 teeth (2 ea)	8 teeth (3 ea)	10* teeth (2 ea)	16* teeth (1 ea) 20 teeth (1 ea)	16* teeth (1 ea) 20 teeth (1 ea) 28* teeth (1 ea)	20* teeth (2 ea) 40* teeth (2 ea)
Cat. No.	89032-288	89032-290	89032-292	89032-294	89032-296	89032-298
Description	1 Kb DNA Molecular Weight Markers, 0.1 µg/µl, 500 µl vial			Cat. No. 95039-806		
	100 bp DNA Molecular Weight Marker, 0.1 µg/µl, 500 µl vial			95039-808		
*Denotes multichannel compatible combs						

VWR® Mini 7 and 10

- True “mini-gel” system
- Quick runs of low to medium throughput

Optional combs - sold separately*

Cat. No.	Description
89030-954	Comb, 16 teeth, 1.5 mm thick
89030-960	Comb, 16 teeth, 1 mm thick
89030-964	Comb, 12 teeth, 1 mm thick, MC compatible
89030-966	Comb, 10 teeth, 1.5 mm thick



Mini 7 includes
7 x 7 cm gel tray
89032-288



Mini 10 includes
7 x 10 cm gel tray
89032-290



VWR® Midi 10



Includes 10 x 10 cm
gel tray
89032-292

- Higher capacity with low buffer volume
- Process large numbers of samples in short to medium runs

Optional combs - sold separately*

Cat. No.	Description
89030-968	Comb, 20 teeth, 1 mm thick, MC compatible
89030-980	Comb, 16 teeth, 0.75 mm thick
89030-984	Comb, 12 teeth, 1.5 mm thick

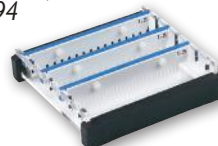
VWR® Midi Plus 10 and 15

- Resolve close molecular weight samples and restriction fragments
- Multichannel compatible combs for quick and easy sample loading

Optional combs - sold separately*

Cat. No.	Description
89030-994	Comb, 20 teeth, 1.5 mm thick
89030-998	Comb, 28 teeth, 1 mm thick, MC compatible
89031-002	Comb, 20 teeth, 1 mm thick

Midi Plus 10 includes
15 x 10 cm gel tray
89032-294



Midi Plus 15 includes
15 x 15 cm gel tray
89032-296



VWR® Maxi 20

- Process large numbers of samples, such as PCR† products from 96 well plates, RFLP analysis and plasmid screenings
- High throughput screening, good resolution



Maxi 20 includes
20x 20 cm gel tray
89032-298

Optional combs - sold separately*

Cat. No.	Description
89031-042	Comb, 40 teeth, 1 mm thick, MC compatible
89031-048	Comb, 25 teeth, 1 mm thick
89031-038	Comb, 20 teeth, 1 mm thick, MC compatible

VWR® Molecular Weight Markers

- 100 bp ladder: 11 fragments from 100-2,000 bp
Ideal for verification of PCR products
- 1 Kb ladder: 13 fragments from 300-10,000 bp
Useful for restriction analysis
- Supplied at a concentration of 0.1 µg/µl

1 Kb ladder
95039-806



100 bp ladder
95039-808

*Additional combs and gel trays available. Contact your VWR Sales Representative for details.

†PCR is a patented process of Hoffmann-LaRoche. Use of the PCR process requires a license.

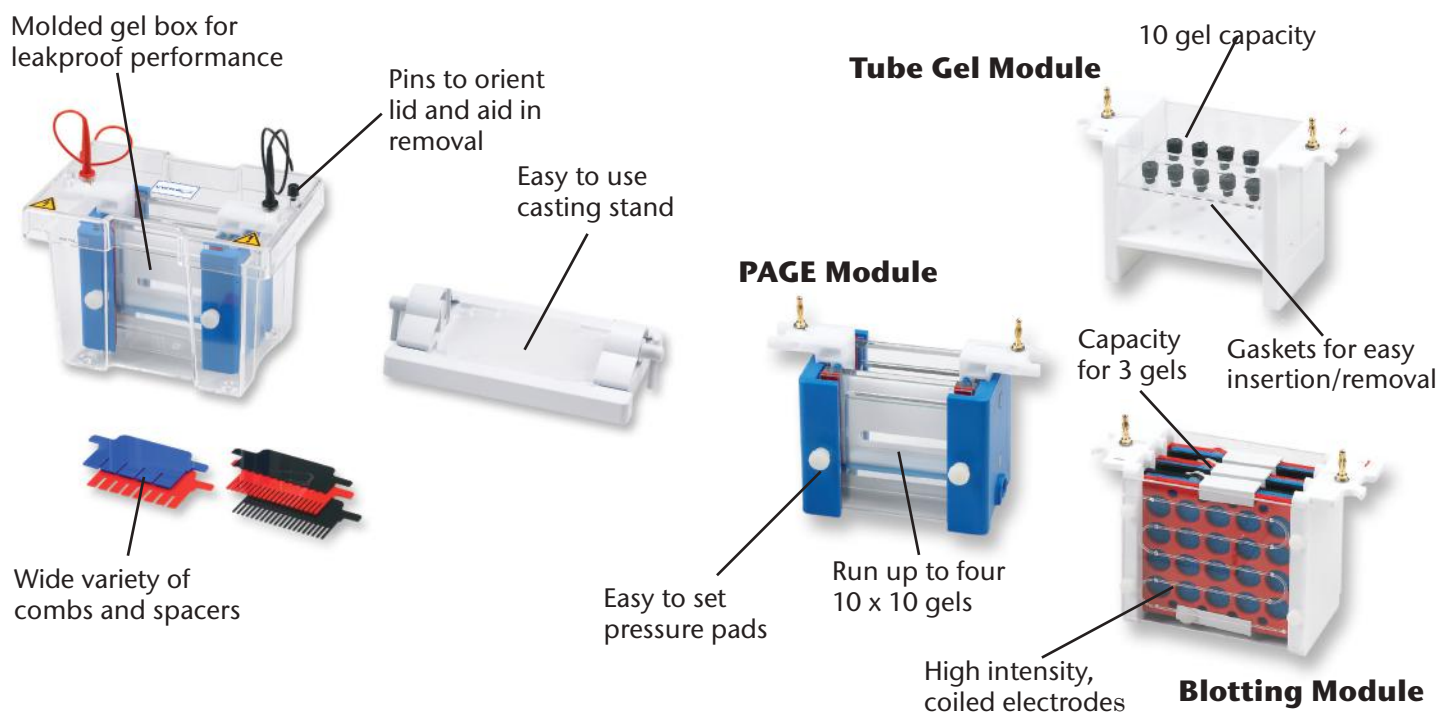
VWR® Modular Mini Vertical PAGE Systems

- PAGE, electroblotting and 2D electrophoresis modules
- Exceptionally easy gel casting
- Customizable accessories

Why purchase three different systems for protein electrophoresis, IEF and blotting when the VWR Modular Mini Vertical PAGE System will do them all. The system features inserts for each application and a common buffer tank in which to run them.

Each insert has its own electrode assembly which connects to the lid of the buffer tank. For safety, the power leads connect directly to the lid - when the lid is removed, power is disconnected from the system. The inserts also have a small pad that fits into position in the lid. This ensures that the lid is always properly placed and aids in its removal. The buffer tank is molded to prevent separation and leaking.

Inserts, accessories and running tanks are manufactured from quality materials to ensure a long life. A variety of spacers, combs and other accessories are available to customize the system. All spacers and combs are color coded or clearly labeled to indicate thickness. Each system is supplied with a cooling pack for superior results during longer runs or quick runs at higher voltages. Three packages are available to meet your needs. Components may also be purchased separately.



Specifications and Ordering Information

	Mini PAGE System	Mini PAGE Electroblotting System	Mini PAGE Tube Gel System
Gel dimensions	10 x 10 cm	NA	8 cm long
Capacity	2 gels/run*	3 gels/transfer	10 tubes/run
Max. sample capacity	20 per gel	NA	10 (1/gel)
Buffer tank dim (W x D x H)	19 x 13 x 15 cm (7 1/2 x 5 x 6")	19 x 13 x 15 cm (7 1/2 x 5 x 6")	19 x 13 x 15 cm (7 1/2 x 5 x 6")
Buffer volume	250 mL	1200 mL	500 mL
Included items**	10 x 10 notched plates, pack of 2 10 x 10 plates w/spacers, pack of 2 1 mm comb, 12 teeth, pack of 2 PAGE Module and casting base	Blotting cassettes, pack of 3 Fiber pads, pack of 6 Blotting module available with or w/o PAGE components	Capillary tubes, pack of 20 Tube supports, pack of 6 Blocking plugs, pack of 10 2D Module
Cat. No.	89032-300	89032-302/95040-438⁺	89032-304

*It is possible to run 4 gels by stacking the plates

** Each system includes buffer tank, lid with leads and cooling pack. The Electroblotting and 2D Gel Systems also include the PAGE components unless otherwise specified.

⁺Electroblotting System with buffer tank only.

VWR® Mini PAGE System

- Run up to four gels simultaneously
- Cast and run gels in the PAGE module
- Sturdy, molded buffer chamber with lid that fits only one way
- Supplied with buffer tank, PAGE module, casting stand, two notched glass plates, two glass plates with bonded spacers, two 12 tooth combs and a cooling pack.



89032-300

Cat. No.	Description
89032-300	VWR Mini PAGE System, complete
89030-928	PAGE Insert (without plates, combs, caster)
89031-068	Notched glass plates, 2 mm thick, pack of 2
89031-070	Plain glass plates, 2 mm thick, pack of 2
89031-078	Plain glass plates, 2 mm bonded spacers, pack of 2
89031-076	Plain glass plates, 1.5 mm bonded spacers, pack of 2
89031-074	Plain glass plates, 1 mm bonded spacers, pack of 2
89031-072	Plain glass plates, .75 mm bonded spacers, pack of 2
89031-086	Notched plates, 2 mm bonded spacers, pack of 2
89031-084	Notched plates, 1.5 mm bonded spacers, pack of 2
89031-082	Notched plates, 1 mm bonded spacers, pack of 2
89031-080	Notched plates, .75 mm bonded spacers, pack of 2
89031-088	Dummy plate
89031-096	Spacers, 2 mm thick, pack of 2
89031-094	Spacers, 1.5 mm thick, pack of 2
89031-092	Spacers, 1 mm thick, pack of 2
89031-090	Spacers, 0.75 mm thick, pack of 2

Cat. No.	Description
89031-124	Comb, 20 teeth, 1.5 mm thick
89031-114	Comb, 20 teeth, 1 mm thick
89031-118	Comb, 20 teeth, 0.75 mm thick
89031-112	Comb, 16 teeth, 1 mm thick, MC compatible
89031-120	Comb, 12 teeth, 2 mm thick
89031-100	Comb, 12 teeth, 1.5 mm thick
89031-098	Comb, 12 teeth, 1 mm thick
89031-104	Comb, 10 teeth, 1.5 mm thick
89031-102	Comb, 10 teeth, 1 mm thick
89031-106	Comb, 10 teeth, 0.75 mm thick
89031-122	Comb, 8 teeth, 1 mm thick, MC compatible
89031-108	Comb, 5 teeth, 1.5 mm thick
89031-116	Comb, 5 teeth, 1 mm thick
89031-110	Comb, 5 teeth, 0.75 mm thick
89031-066	Mini cooling pack

VWR® Electroblotting System

- Blot up to three gels at once
- Cassettes hold gels and membranes in place
- Coiled electrodes generate a high intensity current - standard transfer takes place in an hour
- Supplied with blotting module, 3 cassettes, 6 fiber pads, and PAGE components listed above



89032-302

Cat. No.	Description
89032-302	VWR Mini PAGE Electroblotting System
95040-438	VWR Mini Electroblotting System, w/o PAGE components
89030-930	Blotting insert, includes 3 cassettes
89031-058	Mini blotting cassette
89031-060	Fiber pads for blotting cassette, pack of 6
89031-066	Mini cooling pack

VWR® Tube Gel System

- Capacity for ten first dimension gels
- Gasketed ports for easy tube insertion and removal
- Supplied with tube gel module, 10 blanking caps, 20 disposable capillary tubes, 20 tube gel supports, buffer tank and PAGE components listed above.
- Tube gel module also sold separately

Cat. No.	Description
89032-304	Mini PAGE Tube Gel System, complete
89030-932	Tube gel insert with blanking ports
89031-062	Capillary tubes, disposable, pack of 10
89031-064	Blanking ports, pack of 10
89031-066	Mini cooling pack



89032-304

VWR® Mini Blot Mixer

- Gyrotory action for gentle, efficient staining
- Optimal pitch and speed for processing Western blots
- Safe for cold room or incubator use

The VWR Mini Blot Mixer combines the actions of a rocker and a shaker to produce a three dimensional motion that is gentle enough for fragile gels and blots, yet provides thorough mixing.

Designed for processing blots and staining applications, the pitch and speed of the mixer are optimally set to allow for use of a minimal amount of solution while preventing the membrane or gel from drying out. Using a smaller amount of reagents helps to conserve valuable probes and antibodies.

The mixer is supplied with a non-slip rubber mat to help keep boxes in place on the platform. The housing and platform are easy to clean and decontaminate when needed.

For temperature controlled incubations, the VWR Mini Blot Mixer may be used in a cold room or incubator. The unit is compact and lightweight for easy movement where needed.

Each VWR Mini Blot Mixer is supplied with two VWR Blot Boxes. These acrylic boxes fit easily on the platform and feature a hinged lid with positive catch. Two sizes are available, 8 x 10 and 10 x 10 cm. The larger boxes are supplied with the unit and will accommodate gels from VWR's Modular Mini Vertical PAGE System.

Specifications

Speed	120V - Fixed, 18 rpm 230V - Fixed, 20 rpm
Motion/Pitch	3 Dimensional/fixed 5°
Ambient operating range	+4° to 65°C
Maximum load	0.8 kg (1.75 lbs)
Dimensions, W x D x H	24 x 17.15 x 15 cm (9 3/4 x 6 3/4 x 6")
Weight	0.88kg (1.9 lbs)
Electrical	120V or 230V 50/60 Hz

Ordering Information

Description

- VWR Mini Blot Mixer, with 2 small blotting boxes, 120V
- VWR Mini Blot Mixer, with 2 small blotting boxes, 230V
- Small blot box, 1 mL capacity, 8 x 10 cm, pack of 10
- Large blot box, 6 mL capacity, 10 x 10 cm, pack of 10



95057-436 with 95057-432



95057-440



- Cat. No.**
- 95057-436**
- 95057-438**
- 95057-440**
- 95057-442**

Prices, product appearance and specifications are current at the time of printing, subject to change without notice. Availability for certain products may be limited by federal, state, provincial or local licensing requirements. All prices are in U.S. dollars unless otherwise noted. Offers valid in USA and Canada, void where prohibited by law or company policy, while supplies last. Visit vwr.com to view our privacy policy and additional disclaimers.

VWR, forms of VWR and the VWR logo and/or design are either registered trademarks ®, trademarks ™, or service marks SM of VWR International, LLC in the United States and/or other countries. All other marks referenced herein are registered trademarks, trademarks or service marks of their respective owner(s). For a complete list of trademark owners please visit vwr.com.

©2009 VWR International, LLC. All rights reserved.

0509 10M Lit. No. 92609REV

VWR Products:

Providing value at competitive prices.

VWR, forms of VWR and the VWR logo and/or design are either registered trademarks ™, trademarks ™, or service marks SM of VWR International, Inc. in the United States and/or other countries. All other marks referenced herein are registered trademarks, trademarks or service marks of their respective owner(s). For a complete list of trademark owners, please visit www.vwr.com.