

## Instructions for use

Capillary holder 4 slim shape

English (EN)

This document is a supplement to the Microinjektor operating manual and does not replace it. Therefore, also read the operating manual. The current version is available on the Internet at [www.eppendorf.com/manuals](http://www.eppendorf.com/manuals).

### 1 Main illustration of capillary holder 4 slim shape

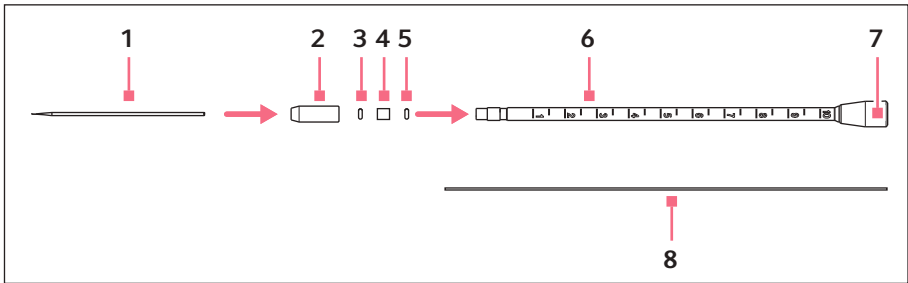


Fig. 1: Capillary holder 4, slim shape

- |   |                                  |   |                         |
|---|----------------------------------|---|-------------------------|
| 1 | Capillary                        | 5 | O-ring in the grip head |
| 2 | Grip head 4 slim shape           | 6 | Capillary holder        |
| 3 | O-ring in the grip head          | 7 | Port for injection tube |
| 4 | Distance sleeve in the grip head | 8 | Cleaning stylet         |

## Instructions for use

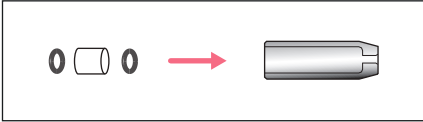
### 2 Capillary holder 4 slim shape English (EN)

## 2 Application with capillaries

### 2.1 Inserting the o-rings and the distance sleeve

#### Prerequisites

- O-rings matching the grip head size are available.



1. Place the new o-rings and the distance sleeve on a flat surface.
2. Press the grip head vertically onto the first o-ring and push the o-ring into the grip head using the capillary holder.
3. Press the grip head vertically onto the distance sleeve and push the distance sleeve into the grip head using the capillary holder.
4. Press the grip head vertically onto the second o-ring and push the o-ring into the grip head using the capillary holder.

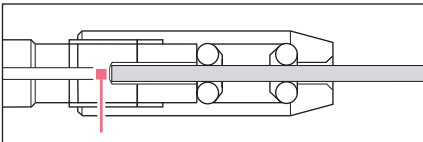
### 2.2 Inserting the capillary



Only capillaries with an outer diameter of 1.0 mm to 1.1 mm fit into the grip head 4, slim shape.

#### Prerequisites

- The grip head is inserted loosely in the capillary holder.



1. Push the capillary through the o-ring in the grip head until the capillary stop.
2. Tighten the grip head.

### 2.3 Replacing the o-ring in the grip head

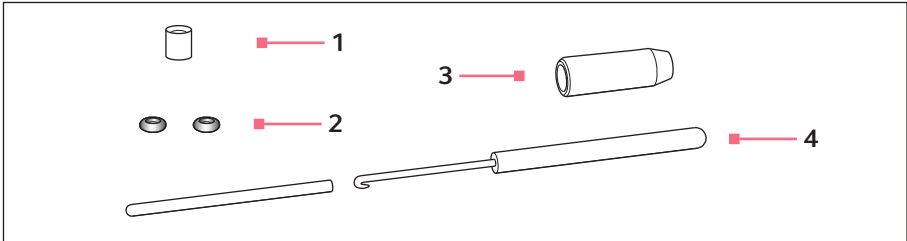


Fig. 2: Grip head with removal tool

**1 Distance sleeve**

**3 Grip head 4 slim shape**

**2 O-rings**

Inner diameter 1.0 mm

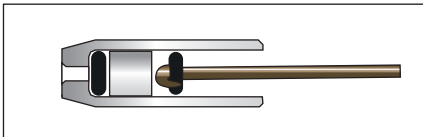
**4 Removal tool**

Hook with protective sleeve

#### Prerequisites

- The grip head has been unscrewed from the capillary holder.
- The capillary has been removed from the grip head.

The hook of the removal tool is used to pull out the o-rings and the distance sleeve.



1. Pull out the first o-ring.
2. Pull out the distance sleeve.
3. Pull out the second o-ring.
4. Insert new o-rings.

### 2.4 Assignment grip head – o-ring

Grip head size	For capillary diameter	O-ring inner diameter
slim shape	1.0 mm	1.0 mm

## Instructions for use

Capillary holder 4 slim shape

English (EN)

### 3 Ordering information

Order no. (International)	Order no. (North America)	Description
5196 062.000	5196062000	<b>Capillary holder 4, slim shape</b> incl. grip head set 4, for capillaries with outer diameter 1.0 mm
5196 063.007	5196063007	<b>Grip head set 4, slim shape</b> for Capillary holder 4 (slim shape), incl. 6 o-rings and 2 distance sleeves, for capillaries with outer diameter 1.0 mm

Your local distributor: [www.eppendorf.com/contact](http://www.eppendorf.com/contact)

Eppendorf AG · 22331 Hamburg · Germany

[eppendorf@eppendorf.com](mailto:eppendorf@eppendorf.com) · [www.eppendorf.com](http://www.eppendorf.com)